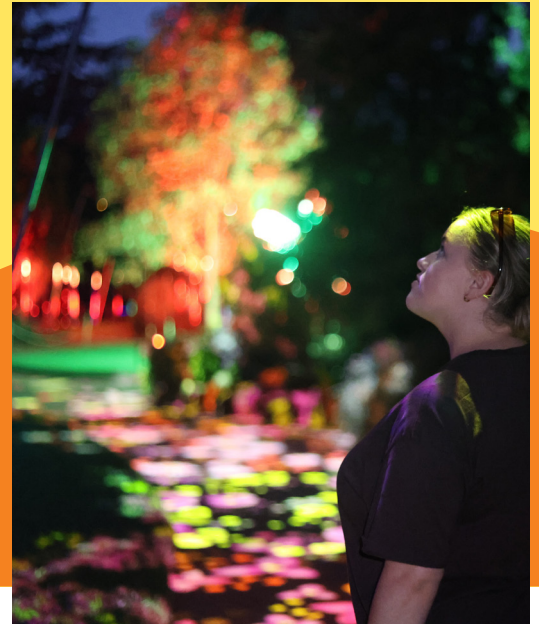


# What's On in April



Your guide to everything happening this month in Albury Wodonga.

<p><b>WED 1 - SAT 11</b></p> <p><b>AURORA - IN BLOOM</b></p> <p>🕒 Multiple time slots running everyday from 20 March to 11 April.</p> <p>📍 Botanic Gardens, Albury</p>	<p><b>THUR 2</b></p> <p><b>EASTER TWILIGHT MARKETS</b></p> <p>🕒 5.00PM - 8.00PM</p> <p>📍 QEii Square, Albury</p>	<p><b>FRI 3 - MON 6</b></p> <p><b>THIRSTY DEVIL BREWERY BORDER BASH</b></p> <p>🕒 12.00am</p> <p>📍 The Thirsty Devil, Albury</p>	<p><b>FRI 3 - MON 6</b></p> <p><b>CAMARO &amp; FIREBIRD NATIONALS</b></p> <p>🕒 10.00am</p> <p>📍 Junction Square, Wodonga</p>
<p><b>FRI 3 - MON 6</b></p> <p><b>EASTER LONG WEEKEND ACTIVITIES</b></p> <p>📍 Brady's Railway Hotel</p>	<p><b>SAT 4</b></p> <p><b>BETHANGA GYMKHANA</b></p> <p>🕒 9.00am</p> <p>📍 Bethanga Recreation Reserve</p>	<p><b>SUN 5</b></p> <p><b>ON THE BORDER COMMUNITY EASTER MARKET</b></p> <p>🕒 9.00am</p> <p>📍 Junction Square</p>	<p><b>TUE 7</b></p> <p><b>PUB CHOIR</b></p> <p>🕒 7.30pm</p> <p>📍 Soden's Hotel</p>
<p><b>FRI 10</b></p> <p><b>BIG SCREEN SUNDOWNER SESSIONS - KUNG FU PANDA AND BREAKFAST CLUB</b></p> <p>🕒 5.00pm</p> <p>📍 The Cube Wodonga</p>	<p><b>SAT 11</b></p> <p><b>COIN &amp; STAMP FAIR</b></p> <p>🕒 9.00am - 3.00PM</p> <p>📍 Wodonga Senior Citizens Centre</p>	<p><b>SAT 11</b></p> <p><b>SELF SOIRÉE - AUTUMN EDITION</b></p> <p>🕒 11.00am</p> <p>📍 Self Pilates and La Maison</p>	<p><b>SAT 11</b></p> <p><b>MONSTER TRUCK MAYHEM THRILL &amp; STUNT SHOW</b></p> <p>🕒 4.00pm</p> <p>📍 Albury Showgrounds</p>



Visit our website for more event info

**SAT 11**

**RICHARD ROXBURGH IN CONVERSATION WITH MARION POTTS**

🕒 7.30pm

📍 Albury Entertainment Centre

**SUN 12**

**PHANTOM: A TRIBUTE TO MICHAEL CRAWFORD**

🕒 2.00pm

📍 Albury Entertainment Centre

**SUN 12**

**BELVOIR PARK COMMUNITY PIZZA OVEN**

🕒 12.00pm

📍 Belvoir Park Wodonga

**WED 15**

**ALED JONES: MY STORY, MY SONGS**

🕒 7.30pm

📍 Albury Entertainment Centre

**THUR 16**

**REPTILE ENCOUNTERS**

🕒 10.00am - 12.00pm

📍 SS&A Club Albury

**FRI 17**

**EMMA MEMMA'S JUNGLE PICNIC TOUR**

🕒 10.00am

📍 Albury Entertainment Centre

**SAT 18**

**PAINT ME LIKE ONE OF YOUR DRAG QUEENS**

🕒 3.30pm

📍 The Cube Wodonga

**SAT 18**

**UNCORKED: THE LOCAL LEGENDS VARIETY HOUR WITH TASH YORK**

🕒 8.00pm

📍 The Cube Wodonga

**SAT 18**

**PLUCK! LIVE IN CONCERT**

🕒 5.00pm

📍 West Albury Memorial Hall

**SAT 18**

**YOUTH EXPO 2026**

🕒 11.00am - 2.30pm

📍 Retro Youth Cafe

**SUN 19**

**MUSIC IN THE GARDENS: THE BACKYARD BANJO CLUB**

🕒 1.00pm - 3.00pm

📍 QEII Square

**WED 22**

**BACH AND THE BARD**

🕒 7.30pm

📍 Hot House Theater

**THU 23**

**HANDS LIKE HOUSES - THE LÓTUS TOUR**

🕒 1.00pm

📍 Beer Deluxe Albury

**THU 23**

**OPEN MIC NIGHT**

🕒 6.00pm

📍 Thirsty Devil Brewery

**FRI 24 - SUN 26**

**HUMM BUGG CON 2026**

🕒 10.00am

📍 Hovell Tree Inn

**SAT 25**

**ANZAC DAY SERVICE**

🕒 Dawn Service: 5.30am

March: 9.00am

📍 Monument Hill and Dean Street

**SUN 26**

**SELF MADE MARKET**

🕒 7.30pm

📍 Wodonga Exhibition Centre

**WED 29**

**NATHAN CAVALERI GROWING PAINS**

🕒 5.00pm

📍 Albury Entertainment Centre

**THU 30**

**NA DJINANG CIRCUS WORKSHOP**

🕒 4.00pm

📍 The Cube Wodonga

**THU 30**

**BROADWAY LOUNGE**

🕒 6.00pm - 8.00pm

📍 The Cube Wodonga



Scan the QR code to find weekly events such as trivia, live music, bingo, and karaoke.