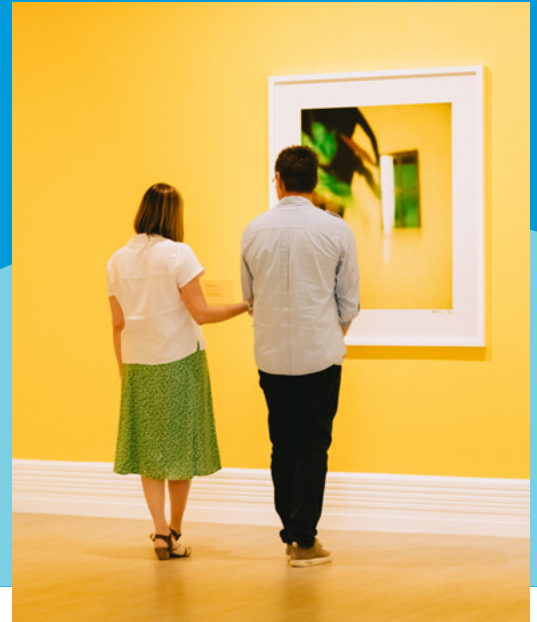


Free Activities



Albury Wodonga is bursting with adventure on a budget. From natural wonders to captivating cultural experiences, one-hundred-percent free-fun awaits. Fill your days with discovery and let the wallet take a holiday!



Parks and Gardens

ALBURY BOTANIC GARDENS

Opened in 1877, the gardens contain over 1000 native & exotic plants. The Children's Garden is home to dinosaurs and a fairy castle.

📍 Corner Dean Street & Wodonga Place, Albury

☎ 02 6023 8111



BELVOIR PARK

A multi-age playground with inclusive liberty swing, lakeside walk, exercise stations, and off-leash dog park.

📍 Huon Street, Wodonga



FREDERICKS (TURTLE) PARK

Play equipment including bike education track, outdoor fitness zone, and nature play area.

📍 Fairview Drive, Albury



MURRAY RIVER PRECINCT

River access, bike paths, playgrounds, and space to relax on the riverbank.

📍 Wodonga Place, Albury



NOREUIL PARK

River access, bike paths, playgrounds, and space to relax on the riverbank.

📍 Wodonga Place, Albury



ODDIES CREEK ADVENTURE PLAYSPACE

A 2,000 square metre fully fenced play space for children of all abilities.

📍 Wodonga Place, Albury



FACILITIES KEY

- Free parking
- Accessible facilities
- Public toilets
- BBQ / Picnic facilities
- Café / Eatery
- Dog friendly
- Swimming
- Watersports
- Playground
- Walking / Hiking
- Cycling
- Rich local flora & fauna
- Art



Tracks, Trails, and Outdoor Activities

EASTERN HILL RESERVE

Follow the ridgeline of Eastern Hill for a panoramic view of Albury Wodonga.

📍 East Street, East Albury



HIGH COUNTRY RAIL TRAIL

Stretching over 80 kilometres from Wodonga to Shelley & featuring the 600 metre Sandy Creek Bridge.

📍 Trail starts corner Havelock & Osburn Street, Wodonga



HUON HILL PARKLANDS

Over 24 kilometres of trails with several tracks along the Kiewa River and access to Huon Hill Lookout.

📍 Whytes Road, Bandiana



LAKE HUME

At six times the size of Sydney Harbour, there's plenty of space to fish, swim, paddle, or relax.

📍 Riverina Highway



HUME DAM WALL

Stroll across the top of the Hume Dam wall. Completed in 1961, it is now a National Engineering Landmark.

📍 Murray Street, Lake Hume Village



NAIL CAN HILL

Spot wildflowers in spring including the critically endangered Spider Orchid. Single track trails cover almost 30 kilometres.

📍 West Albury



WAGIRRA TRAIL

15km return loop linking Wonga Wetlands to the South Albury Trail through blissful riverside parks and soaring red gums.

📍 Access via the Riverside Parks, Albury



WONGA WETLANDS

An ecosystem of lagoons & billabongs. A haven for wildlife, birdwatchers, photographers, bushwalkers & families.

📍 2377 Riverina Highway, Albury



Skate Parks and Pump Tracks

ALBURY SKATE PARK

Beginner and advanced undercover bowls. Street skating section, half basketball court, fitness/parkour area, and small pump track.

📍 David Street, Albury



THURGOONA SKATE PARK

Skate bowl and pump track with all-inclusive play space, and exercise equipment nearby.

📍 Ernest Grant Park, Thurgoona Drive, Thurgoona



WEST ALBURY SKATE PARK

A large concrete half pipe with two transitions, a centre rail, and fun box.

📍 Pemberton Street, West Albury



WAITES SKATE PARK

Located beside a basketball court, the park offers ramps, rails, and ledges for riders of all skill levels.

📍 Hovell Street, South Albury



BARANDUDA BOWL

Two grind rails, sub-box, and bowl with shallow and deep sections. Adjacent to Baranduda Reserve.

📍 Pro Hart Drive, Baranduda



BIRRALEE PARK PUMP TRACK

This circuit of banked turns, rollers, and jumps complements the nearby BMX track.

📍 Silva Drive, West Wodonga



JAMES SCOTT MEMORIAL SKATE PARK

Suitable for scooters, skateboards, BMXs and rollerblades. Includes rails, steps, and ledges, two refuge areas with seating, banked walls, and a fun box.

📍 Willow Park, Pearce Street, Wodonga





Art, Culture, and History

ALBURY CBD HISTORIC BUILDINGS WALKING TOUR

Explore 21 sites at 13 stops in the Albury CBD. Grab a map at Albury Visitor Information Centre.

📍 Smollett & Dean Streets, Albury

☎ 1300 252 879



ALBURY LIBRARYMUSEUM

Explore local history and touring exhibitions.

📍 Corner Swift & Kiewa Streets, Albury

☎ 02 6023 8333



ALBURY WAR MEMORIAL

Opened on Anzac Day 1925, the striking design is topped with a 'torch of liberty' & faced with 40 panes of prismatic glass.

📍 Monument Hill, Memorial Drive, Albury



GATEWAY GALLERY

A volunteer-run gallery, selling & exhibiting art by local artists.

📍 Shop 7 48-54 Lincoln Causeway, Wodonga



HYPHEN - WODONGA LIBRARY GALLERY

A state-of-the-art facility nurturing creativity, connection & curiosity - where art & literature meet.

📍 126 Hovell Street, Wodonga

☎ 02 6022 9330



MURRAY ART MUSEUM ALBURY (MAMA)

A contemporary art experience balancing international exhibitions with deep connections to our region & cultural identity.

📍 546 Dean Street, Albury

☎ 02 6043 5800



PUBLIC ART TRAIL

Scan the QR code and tour the trail at your leisure across Albury Wodonga.



📍 Various locations



THE CROSSING PLACE TRAIL

A 5.1km loop along the Murray River. Discover sculptures by local Indigenous artists and spot an array of wildlife.

📍 Lemke Road, Gateway Island

☎ 02 6022 9300



YINDYAMARRA SCULPTURE WALK

14 sculptures crafted by Aboriginal artists tell age-old First Nations stories through contemporary art.

📍 Access via Kremur Street, Albury

☎ 1300 252 879



Visit our blog for more free travel inspiration.